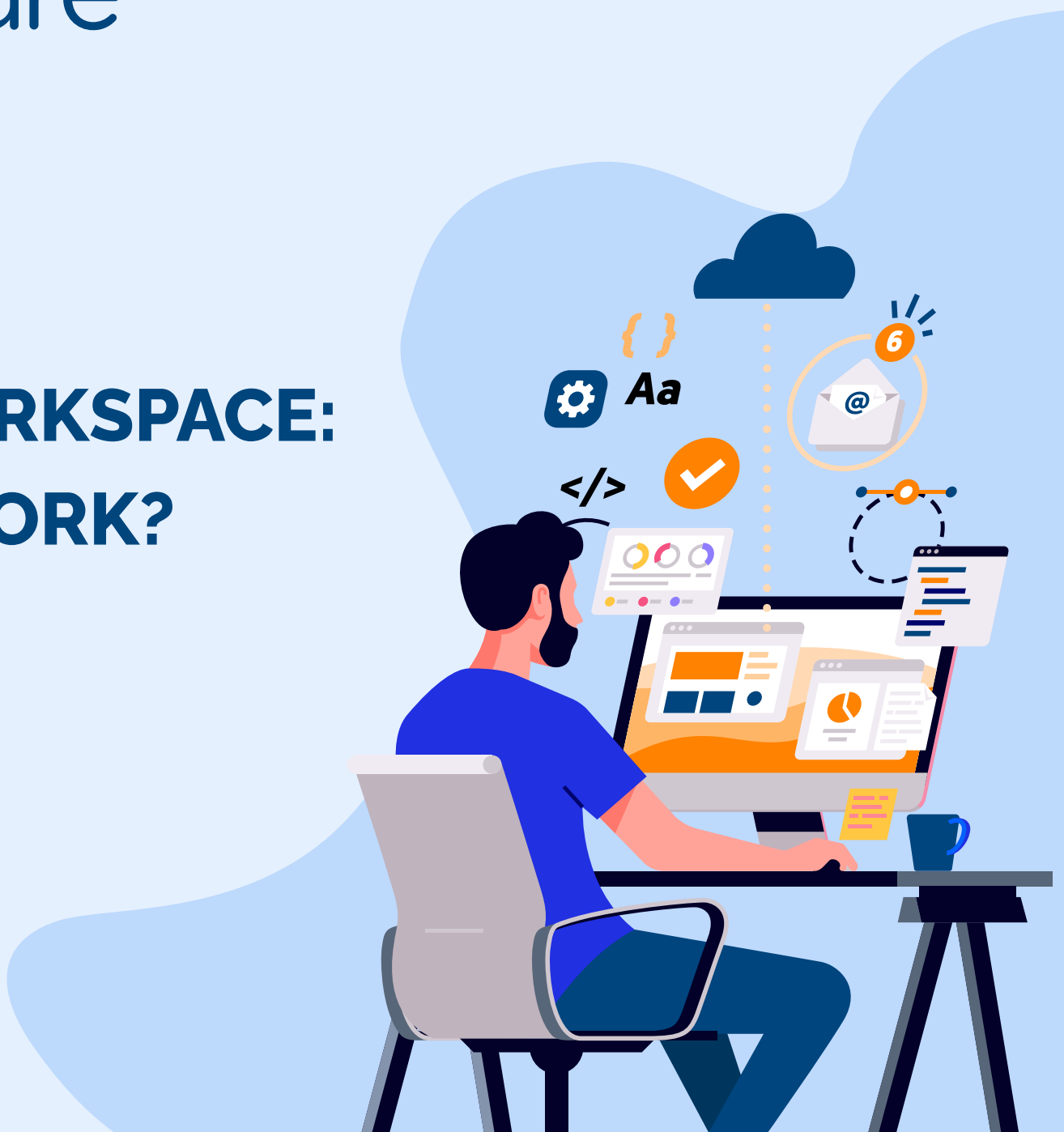


YOUR IDEAL WORKSPACE: HOW DOES IT WORK?

TECHNICAL DATASHEET





“All you need, with just one click of the mouse”

All your applications and information together in a single portal that is accessible from anywhere.

For a fixed monthly charge, including devices, underlying infrastructure, management and support.

A workspace comprises various elements: the devices and the multiple applications your employees use, the hybrid-ready infrastructure everything runs on, and the support to keep everything running. At SLTN, we believe that the more connected these components are, the simpler and more efficient their use and management will be.

That is why we have developed building blocks to structure your Ideal Workspace quickly and easily. We bring all your applications together, wherever they are running: in the public cloud or on flexible HPE infrastructure in your data centre. This includes your DMS, CRM, invoicing software and planning tool. We provide one convenient interface allowing you to quickly access frequently used documents, apps, information sources and the helpdesk.

Your Ideal Workspace from SLTN has everything your employees need in one convenient interface.

SaaS applications and Microsoft 365 integrated into the interface

 Microsoft 365 **SaaS**



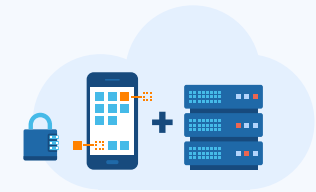
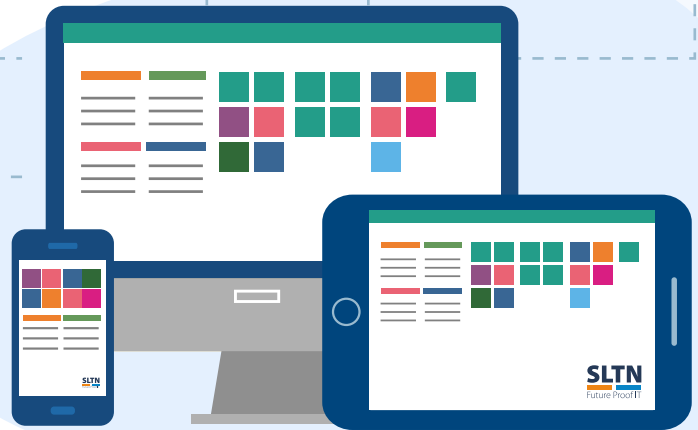
Crucial data and documents readily available



FollowMe Printing for your employees



Service Desk & Service Portal from SLTN, instantly available



Legacy applications available virtualised through the browser



Access and authorisation for any user and any device



Your employees can work anytime, anywhere, and with any device

Your digital workspace is built on four pillars

What are those pillars?



DEVICES

Do you have many fixed workspaces, a dynamic work area, or lots of people working on the road?

Together, we determine the most appropriate devices for the various roles, from laptops and desktops to smartphones and tablets.



APPLICATIONS

Want to merge your legacy apps and new SaaS applications into one?

We turn your entire application landscape into a cohesive environment. We take care of an easy transition to more SaaS applications.



INFRASTRUCTURE

Unwilling or unable to have everything in the public cloud?

We can provide a multi-cloud environment with robust HPE infrastructure, ideally suited to your existing infrastructure.



SUPPORT

Looking for easier management solutions and fewer operational worries?

SLTN can provide the entire environment as a service if required, from first-line support to monitoring and infrastructure management.

Create your ideal workspace with Workspace ONE

Your employees are the heart of your business. Letting them work securely anytime, anywhere, on any device, and with any application empowers them and directly benefits your organisation. However, the rapid adoption of modern and mobile applications, combined with the emergence of powerful mobile devices, presents new challenges for your organisation in these times of working from home. As modern apps usually reside outside the traditional corporate network, they must be supported by or updated to the existing portfolio of legacy, native and web apps. Moreover, the proliferation of such apps also leads to inconsistencies in user experience, security and support requirements.

With VMware's Workspace ONE, SLTN offers a simple and secure business platform that delivers and manages apps on all devices. The digital workspace platform is available in the cloud and on-site, giving your employees secure access to apps, services, data and interactions across devices and locations.

Workspace ONE provides seamless integration of some key components:

- Password-free access to all apps
- Data security and endpoint compliance
- Real-time app delivery and automation
- Secure and mobile access to Microsoft 365 productivity apps for email, calendar, contacts, etc.
- Applicable on any device (laptop, desktop, tablet, phone, handheld scanner, etc.).
- Windows as a Service for improved security and performance



Password-less access to all apps



Data security and endpoint compliance



Real-time app delivery and automation



Secure O365 apps for email, calendar, contacts, browser and content



Unified endpoint management across the broadest number of platforms



Windows as a service for improved security and performance

**Every Ideal Workspace is different.
Want to complete your Ideal Workspace?**

We help you define your needs and design a user-friendly and easy-to-manage environment.

CONTACT SLTN

SLTN
Future Proof IT

vmware[®]